

For Floating Laminate, Floating Engineered Wood and Hardwood

General Overview

QuietDown® acoustic sheets are engineered to provide high-performance sound reduction through sub floor assemblies. QuietDown can be used under hardwood, engineered wood, laminate, carpet and screed systems. *Floor covering assemblies that require the use of adhesives or mortars should use QuietDown HB.*

Installer/Owner Responsibility

Installer assumes all responsibility for final inspection of product quality. Inspection of the acoustic underlay should be done during the installation. Carefully examine underlay before permanently installing it. If material is not acceptable, do not install it and contact seller immediately. Prior to the installation of any acoustic underlay or flooring product, the installer must determine that the job-site environment and sub floor involved meet or exceed all NWFA and NOFA installation guidelines. The manufacturer declines any responsibility for job failure resulting from, or associated with, sub floor or job-site environment deficiencies. When QuietDown is ordered, 5% should be added to the actual square footage needed for cutting allowance.

Job Site Conditions

The structure where QuietDown is to be installed should be enclosed with all outside doors and windows in place, and maintain a minimum average temperature no less than 10° C (50°F). All concrete, masonry, framing members, drywall, paint and other “wet” work should be thoroughly cured and dry. When possible, delay installation of base moulding until flooring installation is complete. QuietDown sheets may mark if edges of panels are struck against walls. Use care when moving panels around the job site.

Testing concrete for excessive moisture

Due to its properties as a vapour barrier, QuietDown retards the curing of new concrete. Slabs younger than 60 days are generally too wet for QuietDown installation. *Test for moisture using the following steps, even if the slab has been in place for over two years:*

- 1.** Lay a 2'x2' piece of QuietDown on the slab.
- 2.** Place a weight on top to prevent moisture from escaping and allow the mat to remain for 24 hours.
- 3.** Remove the weight and QuietDown after 24 hours. If the covered area of the concrete slab shows water marks, then too much moisture is present.

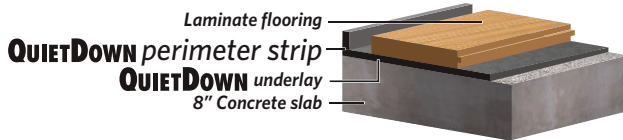
Conduct tests on several areas of the floor in each room, on both old and new slabs. For a meaningful test, the slab surface must be light in colour. When tests indicate too much moisture in the slab, do not proceed with installation. For a moist slab, wait until it dries naturally, or accelerate drying with heat and ventilation, then test again.

Surface Inspection and Preparation

Please conform to NWFA and NOFMA sub floor preparation guidelines. Surface must be structurally sound. Dusty and dirty surfaces should be cleaned just prior to commencing work (no standing water). Surface areas requiring patching and or levelling must be prepared using suitable sub floor surface material in accordance NWFA and NOFMA sub floor preparation guidelines.

For Floating Laminate, Floating Engineered Wood and Hardwood

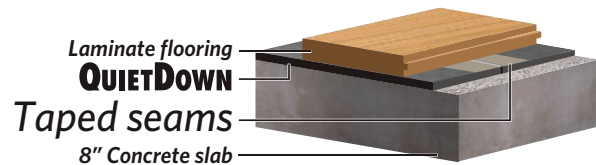
1. Prior to installing the QuietDown sheets, cut a perimeter strip of QuietDown to the total height of the new finished floor assembly using scissors and/or a contractor-grade utility knife and a straight edge. Temporarily install with masking tape around the base perimeter of the walls and any protrusions. Join seams together; do not overlap edges of the strips. *The perimeter strip helps reduce impact noise transmission between the floor and wall.*



Cut QuietDown perimeter strip to height of new finished floor

2. Loosely place QuietDown sheets. Trim to size as necessary using a contractor-grade utility knife and/or scissors. Leave a 1/4" gap along room walls and any protrusions.

3. Tape the seams together using standard duct tape. **Do not overlap seams.** If moisture penetration is a concern, tape all seams using a vapour-proof tape, such as a Tuck brand tape.



4. Once the floor is completely covered with QuietDown, the finished floor can be installed directly overtop. Refer to the flooring manufacturer's installation instructions.



5. Remove masking tape off the perimeter sound isolation strip. Fill gap level with a flexible acoustical caulking or a foam bead insulation material. Install baseboards 1/8" above the finished floor and fill the gap with a flexible acoustical caulking.

NOTE: Due to the recycled tire content in QuietDown Acoustic Underlay, an initial odour of rubber will be present while the panels are exposed. Left exposed, this odour will dissipate within a few days. Once covered with your hard-surface floor covering, no odour will be detectable. Emissions from QuietDown are not harmful.

For Hardwood

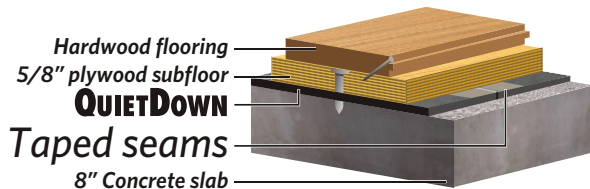
1. Prior to installing the QuietDown sheets, cut a perimeter strip of QuietDown to the total height of the new finished floor assembly using scissors and/or a contractor-grade utility knife and a straight edge. Temporarily install with masking tape around the base perimeter of the walls and any protrusions. Join seams together; do not overlap edges of the strips. *The perimeter strip helps reduce impact noise transmission between the floor and wall.*



Cut QuietDown perimeter strip to height of new finished floor

2. Loosely place QuietDown sheets. Trim to size as necessary using a contractor-grade utility knife and/or scissors. Leave a 1/4" gap along room walls and any protrusions.

3. Tape the seams together using standard duct tape. **Do not overlap seams.** If moisture penetration is a concern, tape all seams using a vapour-proof tape, such as a Tuck brand tape.



4. Once the floor is completely covered with QuietDown, the finished floor can be installed directly overtop. Refer to the flooring manufacturer's installation instructions.



5. Remove masking tape off the perimeter sound isolation strip. Fill gap level with a flexible acoustical caulking or a foam bead insulation material. Install baseboards 1/8" above the finished floor and fill the gap with a flexible acoustical caulking.

NOTE: Due to the recycled tire content in QuietDown Acoustic Underlay, an initial odour of rubber will be present while the panels are exposed. Left exposed, this odour will dissipate within a few days. Once covered with your hard-surface floor covering, no odour will be detectable. Emissions from QuietDown are not harmful.

For Tile and Stone

General Overview

QuietDown® High Bond (HB) acoustic sheets are engineered not only to provide high performance sound reduction through sub floor assemblies but are also compatible with many glues and mortars to achieve a better bonded floor system. National Rubber Technologies' proprietary Symar® process thermally fuses a scrim fabric onto QuietDown HB, to greatly enhance bonding and anchoring of mortars and glues in installations of ceramic, porcelain, stone, engineered wood, laminates, hardwoods, vinyl and carpet. *Floating floor assemblies should use standard QuietDown.*

Installer/Owner Responsibility

Installer assumes all responsibility for final inspection of product quality. Inspection of the acoustic underlay should be done during the installation. Carefully examine underlay before permanently installing it. If material is not acceptable, do not install it and contact seller immediately. Prior to the installation of any acoustic underlay or flooring product, the installer must determine that the job-site environment and sub floor involved meet or exceed all TCNA and TTMAC installation guidelines. The manufacturer declines any responsibility for job failure resulting from, or associated with, sub-surface or job-site environment deficiencies. When QuietDown is ordered, 5% should be added to the actual square footage needed for cutting allowance.

Job Site Conditions

The areas where QuietDown HB sheet is to be installed should be enclosed with all outside doors and windows in place, and maintain a minimum average temperature no less than 10° C (50°F). All concrete, masonry, framing members, drywall, paint and other "wet" work should be thoroughly cured and dry. When possible, delay installation of base moulding until flooring installation is complete. QuietDown panels may mark if edges of panels are struck against walls. Use care when moving panels around the job site.

Surface Inspection and Preparation

Surfaces must be clean, free of dust, oil, grease, coatings, wax, paint, tar, curing agents, primers, sealers, flooring adhesives, gypsum-based products or any deleterious substance and debris which may reduce adhesion. Surfaces must also be exempt of acids, concentrated alkali or chemical cleaning agents. Surfaces must be mechanically sanded, scarified or shot blasted to completely remove all paint, loosely bonded toppings, loose particles and construction debris. Do not install where hydrostatic conditions exist.

Surface must be structurally sound. Any contaminants shall be removed prior to application. Dusty or dry concrete surfaces should be washed with clean water just prior to commencing work (no standing water). Surfaces should be left clean to allow for a good bond. Patching, levelling or areas requiring a mortar bed must be prepared using appropriate sub floor surface preparation and installation guideline in accordance to ANSI specifications determined by tile, stone, and floor mortar manufacturers associations.

For Tile and Stone

1. Prior to installing the QuietDown sheets, cut a perimeter strip of QuietDown to the total height of the new finished floor assembly using scissors and/or a contractor-grade utility knife and a straight edge. Temporarily install with masking tape around the base perimeter of the walls and any protrusions. Join seams together; do not overlap edges of the strips. *The perimeter strip helps reduce impact noise transmission between the floor and wall. In cases where the tile or stone is less than 1/2" thick, a bead of acoustic caulk may be used after the floor is installed, instead of perimeter strips.*



Cut QuietDown perimeter strip to height of new finished floor

2. Loosely place QuietDown HB sheets. Trim to size as necessary using a contractor-grade utility knife and/or scissors. Leave a 1/4" gap along room walls and any protrusions.



Note: QuietDown HB may also be glued to properly prepared concrete and plywood sub floors using wood flooring urethane adhesive in lieu of modified mortar setting materials. Follow wood flooring urethane adhesive manufacturer's sub floor preparation and installation guidelines and proceed directly to step 6.

3. Select an appropriate modified mortar system for your installation and follow the manufacturer's recommended mixing and setting instructions. If water cured urethane adhesives are used in lieu of mortar, follow manufacturer's instructions and skip to step 6.

4. Mix mortar per manufacturers instructions. Determine a starting point; remove the dry fit uninstalled QuietDown HB one section a time so that mortar or glue can now be applied to the substrate.

5. Using the flat side of a 1/4" x 1/4" x 1/4" square notch trowel apply a pressure bond-coat directly to the substrate. Immediately apply additional mortar using the notched side of the trowel. Only apply enough mortar as can be covered with the QuietDown HB sheet within 7 to 10 minutes. Do not allow mortar to skin over. If mortar has skinned over, completely remove any skinned mortar and re-apply fresh mortar.

6. For wood flooring urethane adhesives, spread glue directly to the substrate using a 1/8" x 1/8" x 1/8" square notch trowel.

7. While the mortar or urethane is still fresh, lay in the QuietDown HB acoustic sheets. Place one edge of QuietDown HB sheet on the floor and roll down into the thin set or urethane (roll perpendicular to the troweled ridges of the thin set or urethane). Move the mat back and forth perpendicular to the thin set ridges. Leave a 1/4" gap around perimeter room walls or any protrusions that later will be filled level with an acoustical caulking material. Immediately roll underlay so as to embed the underlay into the mortar or urethane using a 75 lb. roller. Place next sheet and make contact with edges of previous sheet. **Do not overlap the edges of the QuietDown HB sheets.** If any thin set or urethane extends out between the edges of the sheet, either scrape off the excess or take the flat edge of a trowel and strike down the thin set or urethane flat with the sheet.

(cont'd...)

For Tile and Stone (cont'd)



Place one edge of QuietDown HB sheet onto the spread mortar or glue

8. Continue this process until the entire area has been covered.

9. Protect the freshly installed underlay from foot traffic for a minimum of 24 hours.

10. You are now ready to install ceramic, porcelain and or natural stone products to the QuietDown HB underlay. Select the appropriate modified mortar system for your tile, stone, or porcelain installation and follow the manufacturer's recommended mixing and setting instructions. *Note: trowel notch size to be determined by mortar manufacturer or tile installer so as to achieve minimum 98% mortar coverage to the back of the tile. A modified floor mortar is required. Do not use a non-modified mortar.*

11. Using the flat side of a notched trowel, apply a pressure bond coat to the QuietDown HB underlay. Immediately apply additional mortar using the notched side of the trowel and spread evenly. Only apply enough mortar as can be covered with the flooring material within 7 to 10 minutes.

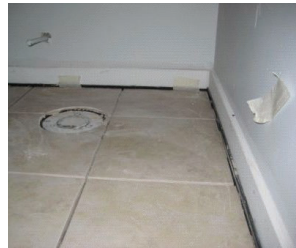


Trowel mortar evenly

13. Press tile firmly with a back and forth motion into mortar so as to help achieve optimal contact of mortar to the back of the tile. Continue in this fashion until installation is complete.

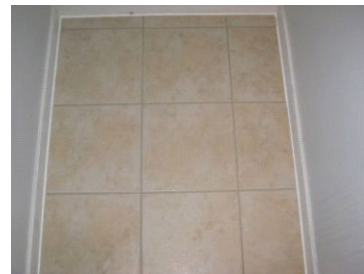
14. Allow tile installation to set for a minimum of 24 - 48 hours before grouting.

15. Remove the masking tape off the perimeter sound isolation strip. Fill gap level with a flexible acoustical caulking material. Install baseboards 1/8" above the finished floor and fill the gap with a flexible acoustical caulking.



Install perimeter sound isolation strip and fill gap level with a flexible acoustical caulking.

16. Grout tile installation.



NOTE: Due to the recycled tire content in QuietDown HB, an initial odour of rubber will be present while the panels are exposed. Left exposed, this odour will dissipate within a few days. Once covered with your hard-surface floor covering, no odour will be detectable. Emissions from QuietDown are not harmful.

For Engineered and Solid Wood (double-stick process)

General Overview

QuietDown® High Bond (HB) acoustic sheets are engineered not only to provide high performance sound reduction through sub floor assemblies but are also compatible with many glues and mortars to achieve a better bonded floor system. National Rubber Technologies' proprietary Symar® process thermally fuses a scrim fabric onto QuietDown HB, to greatly enhance bonding and anchoring of mortars and glues in installations of ceramic, porcelain, stone, engineered wood, laminates, hardwoods, vinyl and carpet. *Floating floor assemblies should use standard QuietDown.*

Installer/Owner Responsibility

Installer assumes all responsibility for final inspection of product quality. Inspection of the acoustic underlay should be done during the installation. Carefully examine underlay before permanently installing it. If material is not acceptable, do not install it and contact seller immediately. Prior to the installation of any acoustic underlay or flooring product, the installer must determine that the job-site environment and sub floor involved meet or exceed all NWFA and NOFA installation guidelines. The manufacturer declines any responsibility for job failure resulting from, or associated with, sub floor or job-site environment deficiencies. When QuietDown HB is ordered, 5% should be added to the actual square footage needed for cutting allowance.

Job Site Conditions

The areas where QuietDown HB sheet is to be installed should be enclosed with all outside doors and windows in place, and maintain a minimum average temperature no less than 10° C (50°F). All concrete, masonry, framing members, drywall, paint and other "wet" work should be thoroughly cured and dry. When possible, delay installation of base moulding until flooring installation is complete. QuietDown panels may mark if edges of panels are struck against walls. Use care when moving panels around the job site.

Testing concrete for excessive moisture

Due to its properties as a vapour barrier, QuietDown retards the curing of new concrete. Slabs younger than 60 days are generally too wet for QuietDown installation. *Test for moisture using the following steps, even if the slab has been in place for over two years:*

- 1.** Lay a 2'x2' piece of QuietDown on the slab.
- 2.** Place a weight on top to prevent moisture from escaping and allow the mat to remain for 24 hours.
- 3.** Remove the weight and QuietDown after 24 hours. If the covered area of the concrete slab shows water marks, then too much moisture is present.

Conduct tests on several areas of the floor in each room, on both old and new slabs. For a meaningful test, the slab surface must be light in colour. When tests indicate too much moisture in the slab, do not proceed with installation. For a moist slab, wait until it dries naturally, or accelerate drying with heat and ventilation, then test again.

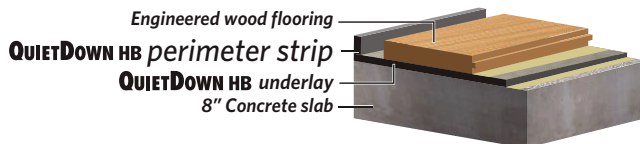
Surface Inspection and Preparation

Surfaces must be clean, free of dust, oil, grease, coatings, wax, paint, tar, curing agents, primers, sealers, flooring adhesives, gypsum-based products or any deleterious substance and debris which may reduce adhesion. Please conform to NWFA and NOFMA sub floor preparation guidelines. Surfaces must also be exempt of acids, concentrated alkali or chemical cleaning agents. Surfaces must be mechanically sanded, scarified or shot blasted to completely remove all paint, loosely bonded toppings, loose particles and construction debris. Do not install where hydrostatic conditions exist. Surface must be structurally sound. Dusty or dry concrete surfaces should be washed with clean water just prior to commencing work (no standing water). Surfaces should be left clean and dry to allow for a good bond. Areas requiring patching and or levelling must be prepared using suitable sub floor surface material in accordance NWFA and NOFMA sub floor preparation guidelines.

For Engineered and Solid Wood (double-stick process)

The successful installation of QuietDown HB acoustic underlay depends on the capacity of glues to fully embed into the fused scrim fabric covering both sides of the QuietDown HB sheet. The scrim fabric greatly enhances the bonding/anchoring capacity of urethane based wood floor adhesives. Proper coverage and transfer (95%) of the adhesive to the QuietDown HB acoustic sheet is required for a successful, void-free tile installation.

1. Prior to installing the QuietDown HB sheets, cut a perimeter strip of QuietDown HB to the total height of the new finished floor assembly using scissors and/or a contractor-grade utility knife and a straight edge. Temporarily install with masking tape around the base perimeter of the walls and any protrusions. Join seams together; do not overlap edges of the strips. *The perimeter strip helps reduce impact noise transmission between the floor and wall.*



Cut QuietDown perimeter strip to height of new finished floor

2. Loosely place QuietDown HB sheets. Trim to size as necessary using a contractor-grade utility knife and/or scissors. Leave a 1/4" gap along room walls and any protrusions.

3. Select a quality wood floor urethane adhesive.

4. Spread the wood floor urethane adhesive with a 1/8" x 1/8" x 1/8" notched trowel directly to the prepared sub floor following the adhesive manufacturer's preparation and installation instructions. Avoid excessive adhesive thickness by passing the trowel evenly through the adhesive.

5. While the glue is still fresh, start with one edge of QuietDown HB sheet on the floor and lay down into the spread glue.

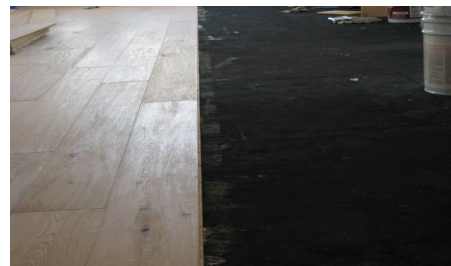


6. Leave a 1/4" gap along room walls or any protrusions that later will be filled level with a quality acoustical caulking material. Place next sheet and make contact with edges of previous sheet. **Do not overlap the edges of the QuietDown HB sheets.** If any adhesive extends out between the edges of the sheet, simply take the flat edge of a trowel and strike down the adhesive flat with the sheet.

7. Continue this process until the entire area has been covered. Roll underlay so as to embed the underlay into the glue using a 75 lb. roller.

8. Protect the freshly installed underlay from foot traffic for a minimum of 24 hours.

9. The wood floor now can be installed. Follow the wood and adhesive manufacturer's installation instructions to determine correct trowel size. Apply the floor adhesive directly onto the QuietDown HB sheet. Lay the wood floor into the adhesive, position correctly and press down firmly.



(cont'd...)

For Engineered and Solid Wood (double-stick process)

- 10.** Continue in this fashion until installation is complete.
- 12.** Protect from foot traffic for a minimum of 24 hours.
- 13.** Remove the masking tape off the perimeter sound isolation strip. Fill gap level with a flexible acoustical caulking or similar acoustic material. Install baseboards 1/8" above the finished floor and fill the gap with a flexible acoustical caulking.

NOTE: Due to the recycled tire content in QuietDown HB, an initial odour of rubber will be present while the panels are exposed. Left exposed, this odour will dissipate within a few days. Once covered with your hard-surface floor covering, no odour will be detectable. Emissions from QuietDown are not harmful.